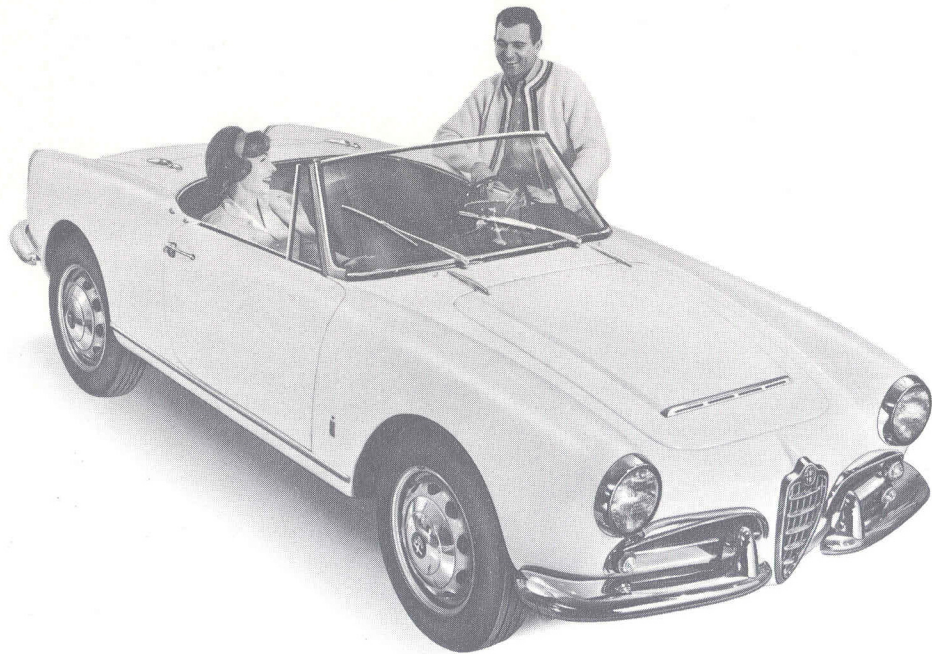


why not pick up  
your alfa romeo  
in europe  
and  
save







*CarDisc International, Ltd.*

© Copyright 2004

# Giulia Spider

**2-passenger sports car**

**Body by Farina**

**Engine:** 4-cylinder in-line, all-aluminum with double overhead cams

**Power Output:** 104 hp SAE at 6,200 rpm

**Speed:** to 107 mph

**Gearbox:** 5 fully synchronized forward speeds

**Partial List of Standard Equipment:** high speed cinturato tires, tachometer, roll-up windows, disc brakes, automatic windshield washer, back-up lights, heater and defroster, trip mileage meter, undercoating

## Giulia Spider Veloce

**Specially tuned 2-passenger sports car version of Giulia Spider**

**Power Output:** 129 hp SAE at 6,500 rpm

**Speed:** to 112 mph

**Carburetors:** 2 horizontal twin-choke Weber units

(Note: All other specifications and list of standard equipment same as Giulia Spider)

# travel in style

**Pick up your Alfa Romeo anywhere in Europe** — The Alfa Romeo European Delivery Plan is the easy way to enjoy a European vacation at your leisure . . . see the things you want to see. . . get to the out-of-the-way places that make any European holiday a memorable experience.

**The car's the same** — The Alfa Romeo model you will drive in Europe is the same as we sell in this country and conforms to all road regulations here. Such modifications as the location of the steering wheel, lights, etc., are designed for the country of destination even though the car is actually delivered to you in Europe.

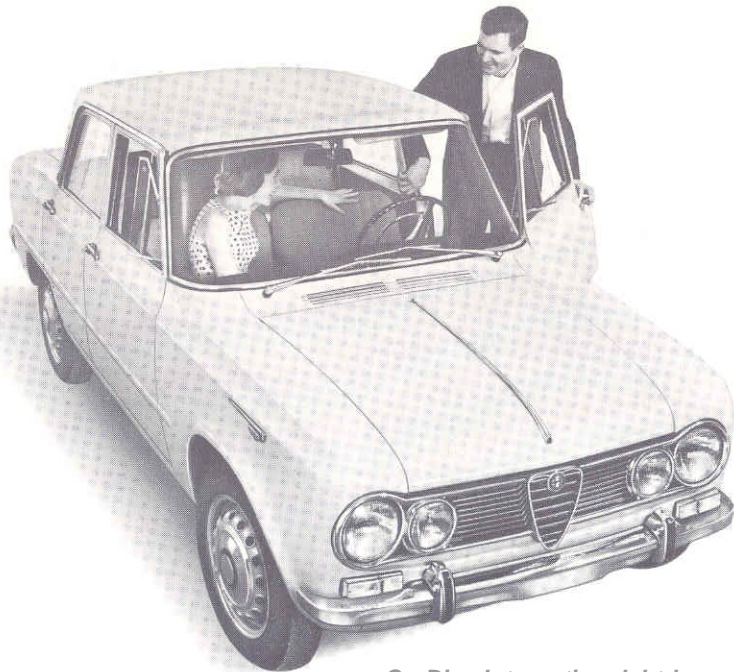
*You can pick up your Alfa anywhere in Italy at no additional cost.*

Or you can have your Alfa Romeo delivered wherever you like for a modest transportation charge.

If you wish to travel by public accommodation before picking up your Alfa . . . fine. Specify where and when delivery is to be made in your order.

If you decide that picking up your Alfa Romeo in Europe is for you . . . or if you require some further information, your Alfa Romeo dealer will be able to offer you sound advice and supply you with the necessary forms and information on purchase, licenses, insurance and of course, getting your Alfa Romeo back home. You'll save money on your Alfa and enjoy driving your own car in Europe.





# Giulia TI

**5-passenger 4-door economy sports sedan**

**Engine:** 4-cylinder in-line, all aluminum with double overhead cams

**Power Output:** 104 hp SAE at 6,000 rpm

**Speed:** to 105 mph

**Gas Consumption:** 23.5 mpg at 62 mph

**Gearbox:** 5 fully synchronized forward speeds

**Partial List of Standard Equipment:** High speed tires, tachometer, trip mileage meter, power brake servo, back-up lights, automatic windshield washer, hood and trunk lights, heater and defroster, reclining seats, undercoating



# cars and prices

Every model Alfa Romeo manufactures is available under the Alfa Romeo European Delivery Plan:

GIULIA TI • GIULIA SPIDER • GIULIA SPIDER VELOCE • GIULIA SPRINT GT • \*GIULIA TZ • 2600 SPIDER • 2600 SPRINT • \*2600 BERLINA

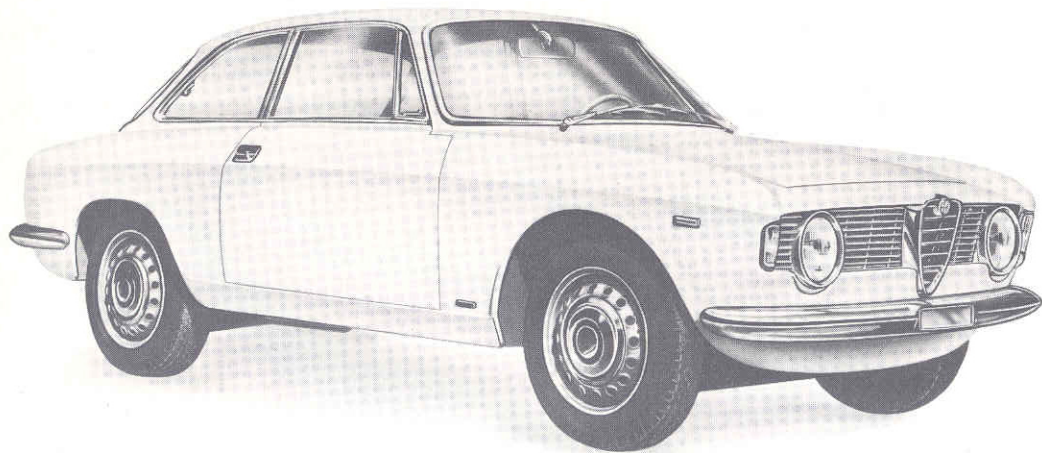
**ACCESSORIES:** Wood Steering Wheel available for — GIULIA SPIDER, SPIDER VELOCE and GIULIA SPRINT GT. Hardtop available for GIULIA SPIDER, SPIDER VELOCE and 2600 SPIDER.

The Alfa Romeo factory will not be able to supply accessories such as luggage racks, side-view-mirrors, air horns, etc. as these

items require specific placement subject to the buyer's whims. However, the Alfa Romeo subsidiary which is holding your car will be able to direct you to sources of supply from which these items can be obtained at reasonable prices, or will, in most cases arrange for the installation of accessories themselves if the buyer wishes to have them installed by an Alfa dealer when the car is delivered.

*\*If you desire either of these models, the factory requests an additional waiting period of approximately three months before delivery. (see enclosed sheet for prices)*





# Giulia Sprint GT

**Sports coupe with 2 bucket seats and 2 "occasional" seats in rear.**

**Engine:** 4-cylinder, in-line, all aluminum with double overhead cams

**Power Output:** 122 hp SAE at 6,500 rpm

**Speed:** over 112 mph

**Carburetors:** 2 horizontal twin-choke Weber units

**Gearbox:** 5 fully synchronized forward speeds

**Partial List of Standard Equipment:** Reclining bucket seats, high speed tires, tachometer, trip mileage meter, 4 wheel disc brakes, power brake servo, back-up lights, automatic windshield washer, heater and defroster, undercoating



# how to order your new alfa romeo

**How to order your new Alfa Romeo** — Your Alfa Romeo dealer will help you complete an Application for Purchase and will forward it to our Overseas Sales Department for you. In filling out this application he will be able to help you select interior and exterior color combinations so that the Alfa Romeo you pick up in Europe is exactly as ordered.

As soon as we have received the Application for Purchase, we will confirm the availability with our factory and return a Confirmation of Order complete with all the necessary documents to your dealer.

Twenty days before delivery, we will forward a bill of sale and a letter of presentation to the subsidiary in Europe where delivery of the car will be taken.

**No special driving license required** — Your current driving li-

cense as issued by your state is recognized in all Western European countries.

**Registering your car in Europe** — Car registration is issued for one year only as you will have to export your car from Europe within twelve months after delivery, in order to exempt your car from European sales taxes and duties.

Cars can be pre-registered in Italy. When cars are not pre-registered, there is a waiting period of 48 hours before you can exit with the car from Italy. However, you are able to drive the car during this period with a temporary registration.

In all other European countries, there is at least a 48-hour waiting period for registration. Ask your Alfa Romeo dealer for details.





## 2600 Spider

**2 + 2 ultra high performance sports car**

**Body by Touring**

**Engine:** 6-cylinder all aluminum with double overhead cam shafts

**Power Output:** 165 hp SAE at 5,900 rpm

**Speed:** to 124 mph

**Gearbox:** 5 fully synchronized forward speeds

**Carburetors:** 3 twin throated Solex units

**Partial List of Standard Equipment:** Reclining seats, high speed tires, tachometer, trip mileage meter, disc brakes, vinyl upholstery, automatic windshield washer, deluxe tool kit, oil cooling system, undercoating



# arrange your auto insurance before you leave

Public liability and property damage (third party) insurance is required by law throughout Western Europe. Policies are issued on a monthly basis with a one-month minimum:

Public liability, fire and theft insurance: one month \$60.00 • three months \$80.00 • six months \$145.00 • twelve months \$215.00

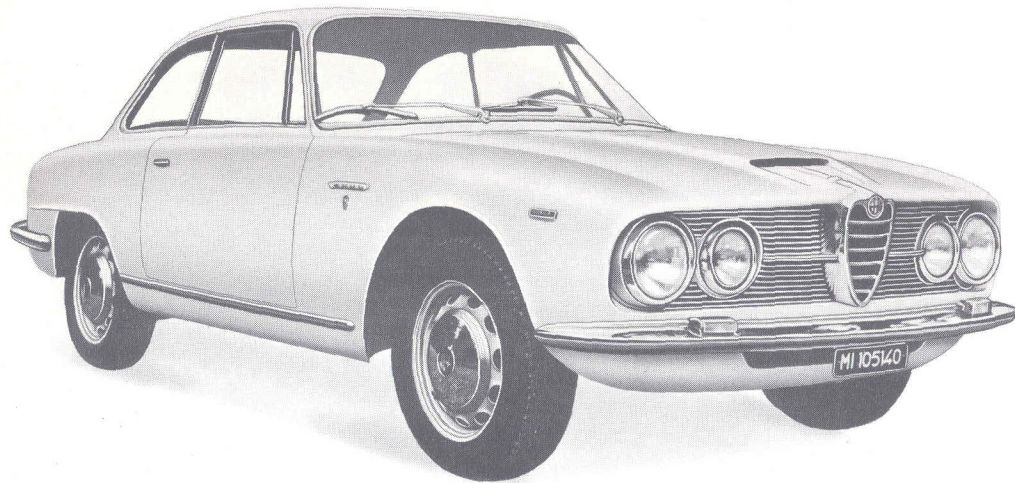
For collision insurance costs see your Alfa Romeo dealer or insurance agent.

**You avoid special taxes** — Cars purchased in Italy for export are eligible for 10% refund of the retail price upon first exit of the car from Italy. You will be provided with a form upon delivery of the car, that should be stamped at time of exit from Italy. The stamped form should be sent to Alfa Romeo S.p.A., Dives Turisti, Via Gattamelata 45, Milano, Italy. The 10% will be refunded from Alfa Romeo, Inc.

to you regardless of where you travel. The enclosed price sheet reflects this 10% refund.

**Getting your new Alfa Romeo back home is simple** — In order to avoid complications it is best to arrange for the shipment of your car back home before you leave the United States. This can be arranged through your Alfa Romeo dealer or through any firm which specializes in this service. Unlike the shipment of ordinary merchandise, there are specific details that must be looked after when trans-shipment of a car is affected. This firm will pick-up your Alfa Romeo from any point in Europe. They will prepare the mechanical parts for the ocean voyage. When the car arrives they will handle all the documents necessary for legal entry into the United States and also deliver the car to your home anywhere in the United States or Canada.





# 2600 Sprint

**2 + 2** ultra high performance coupe

**Body by Bertone**

**Engine:** 6-cylinder all aluminum with double overhead cams

**Power Output:** 165 hp SAE at 5,900 rpm

**Speed:** to 124 mph

**Gearbox:** 5 fully synchronized forward speeds

**Carburetors:** 3 twin throated Solex units

**Partial List of Standard Equipment:** High speed tires, tachometer, reclining seats, padded dash, genuine leather upholstery, rear seat arm rest, trip mileage meter, disc brakes, electric windows, automatic windshield washer, oil cooling system, hood and trunk lights, back-up lights, undercoating



# where can you get your new alfa romeo serviced in europe

There are literally hundreds of Alfa Romeo dealers on the European continent, England, Africa, and Asia who will provide you with service plus the normal mileage checkups. They are located in every major city in just about every country in the world. When you take delivery of your Alfa Romeo, you will be supplied with a directory of all Alfa Romeo dealers, plus their addresses and even their telephone numbers.

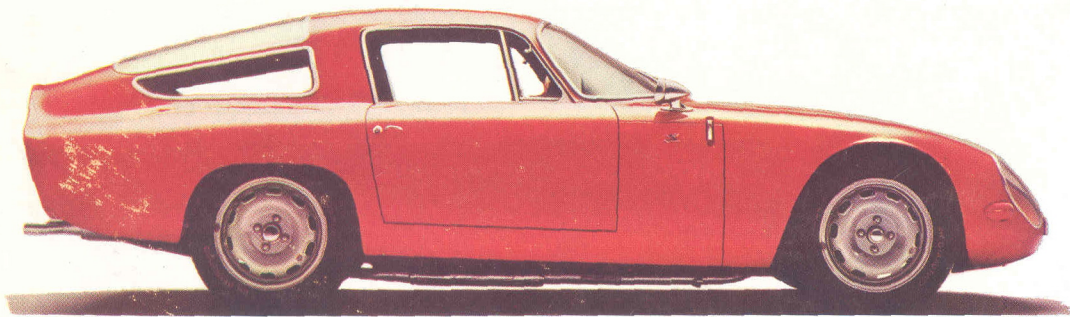
## **What do you save when you pick up your Alfa Romeo in Europe**

— You need not restrict yourself to only major centers of attraction, or stay only at expensive hotels and travel only by scheduled transportation. With your Alfa Romeo you can go anywhere you

please, do what you please, and when. This is truly the way Europe is meant to be seen and enjoyed most.

Not only can you save on your trip across Europe, but when you bring your car back you will find that you have saved even more with the purchase of your Alfa Romeo because its total cost to you will be less than had you purchased it at home. Your savings will range from hundreds of dollars on the lowest priced Alfa up to a thousand dollars or more. What's more, the complete Alfa Romeo network of servicing dealers guarantees your new Alfa Romeo a trouble-free trip that will be remembered.





# Giulia TZ

**Zagato bodied ultra light GT Coupe**

**Power output:** 129 hp SAE at 6,500 rpm

**Speed:** over 130 mph

**Plus:** Two horizontal twin choke Webbers, independent 4-wheel suspension, special tubular chassis, streamlined "Kamm" back, cast alloy wheels, a fast shifting five forward speed gear box and 4-wheel disc brakes



# alfa romeo

231 Johnson Ave., Newark 8, New Jersey  
Phone: (Code 201) 824-4949; Western Division:  
1700 Daisy Ave., Long Beach 13, California  
Phone: (Code 213) 435-8351



CarDisc International, Ltd.

P. O. BOX 1403

SEOUL, KOREA

PHONE 4-0685

© Copyright 2004